

# 2018 Doppelliga



Oil Pattern Distance: **41 Feet**  
 Forward Oil Total: **13.31 mL**  
 Forward Boards Crossed: **242 Boards**

Reverse Brush Drop: **42 Feet**  
 Reverse Oil Total: **5.775 mL**  
 Reverse Boards Crossed: **105 Boards**

Oil Per Board: **55 uL**  
 Volume Oil Total: **19.085 mL**  
 Total Boards Crossed: **347 Boards**

	Start	Stop	Loads	Speed	Crossed	Start	End	Feet	T.Oil
1	3L	3R	3	14	105	0.0	3.9	3.9	5775
2	9L	9R	1	14	23	3.9	5.8	1.9	1265
3	10L	10R	2	18	42	5.8	10.9	5.1	2310
4	11L	11R	2	18	38	10.9	16.0	5.1	2090
5	12L	12R	2	18	34	16.0	21.1	5.1	1870
6	2L	2R	0	18	0	21.1	34.0	12.9	0
7	2L	2R	0	26	0	34.0	38.0	4.0	0
8	2L	2R	0	30	0	38.0	41.0	3.0	0

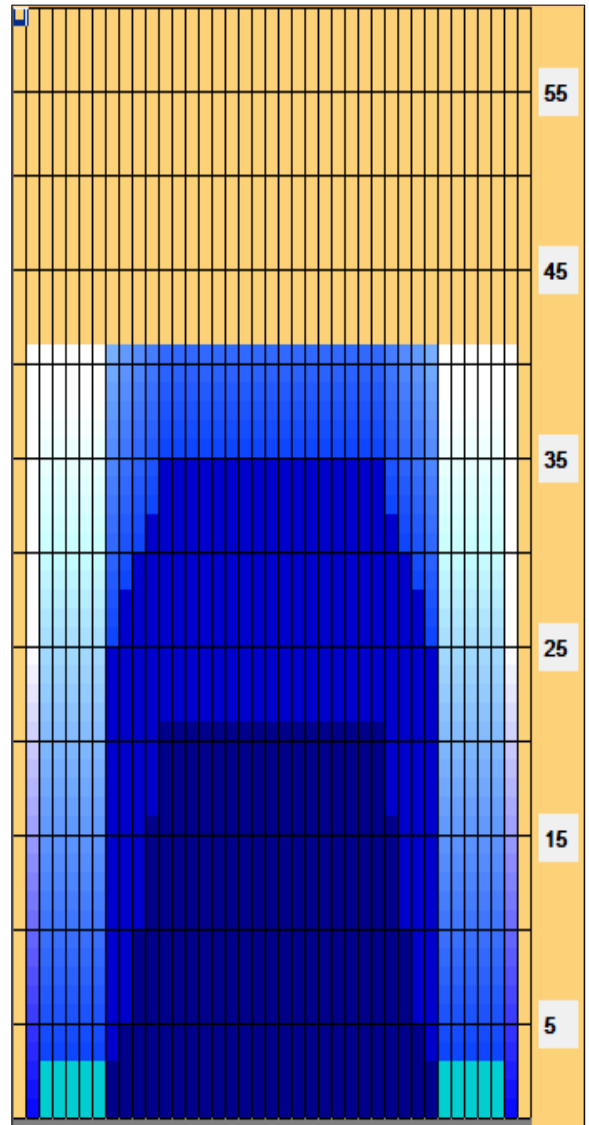
Navigation: Forward Reverse More

	Start	Stop	Loads	Speed	Crossed	Start	End	Feet	T.Oil
1	2L	2R	0	30	0	41.0	35.0	-6.0	0
2	12L	12R	1	18	17	35.0	32.5	-2.5	935
3	11L	11R	1	18	19	32.5	30.0	-2.5	1045
4	10L	10R	1	18	21	30.0	27.5	-2.5	1155
5	9L	9R	1	18	23	27.5	25.0	-2.5	1265
6	8L	8R	1	14	25	25.0	23.1	-1.9	1375
7	2L	2R	0	10	0	23.1	0.0	-23.1	0

Navigation: Forward Reverse More

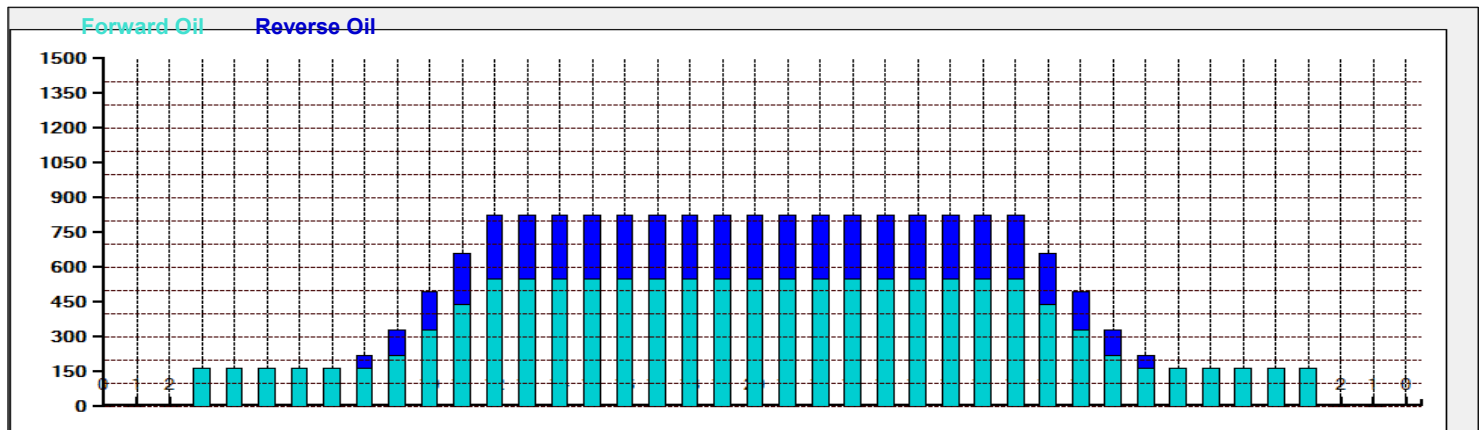
Conditioner:  
Type In or Select One  
 TransferType:  
Type In or Select One

- Forward
- Reverse
- Combined
- Buff



Malta Open Pattern for 2018

Item Description	3L-7L:18L-18R Outside Track:Middle	8L-12L:18L-18R Middle Track:Middle	13L-17L:18L-18R Inside Track:Middle	18L-18R:17R-13R Middle: Inside Track	18L-18R:12R-8R Middle:Middle Track	18L-18R:7R-3R Middle:Outside Track
Track Zone Ratio	5	1.63	1	1	1.63	5



# 2018 Doppelliga



---

<b>Oil Pattern Distance:</b>	<b>41 Feet</b>	<b>Reverse Brush Drop:</b>	<b>42 Feet</b>	<b>Oil Per Board:</b>	<b>55 uL</b>
<b>Forward Oil Total:</b>	<b>13.31 mL</b>	<b>Reverse Oil Total:</b>	<b>5.775 mL</b>	<b>Volume Oil Total:</b>	<b>19.085 mL</b>
<b>Forward Boards Crossed:</b>	<b>242 Boards</b>	<b>Reverse Boards Crossed:</b>	<b>105 Boards</b>	<b>Total Boards Crossed:</b>	<b>347 Boards</b>

---